

RANGE COMPOSITION

EVO700: range comprised of over 100 models designed to guarantee the highest level of performance, reliability, energy saving, safety standards and ergonomic operation. These concepts are reflected throughout the line in its modularity, construction and numerous configurations. Thanks to its advance technology and premium performance, the EVO700 is a perfect solution for institutions with a limited footprint as well as restaurants needing to obtain the most from the kitchen space. The models detailed in this sheet are 12 litres electric fryers with one or two wells.



178123

EVO700

ELECTRIC FRYERS - 12 LT **ZANUSSI** PROFESSIONAL

FUNCTIONAL AND CONSTRUCTION FEATURES

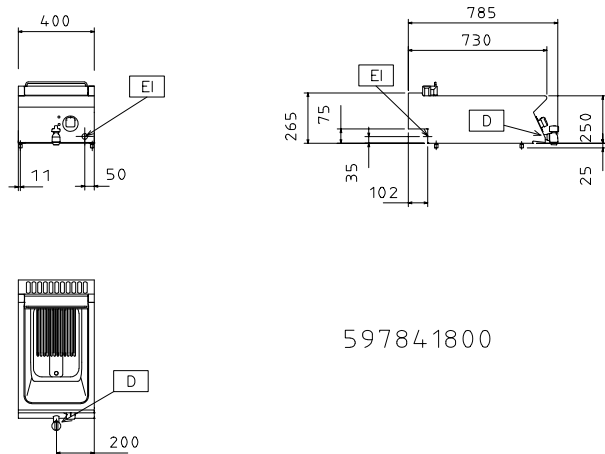
- ◆ Tilting incoloy armoured high efficiency heating elements located inside the well.
- ◆ Deep drawn V-Shaped well with rounded corners for safe and easy cleaning.
- ◆ The V-Shaped well is made from two pieces of pressed stainless steel that are seamlessly welded together for maximum hygiene, safety and reliability.
- ◆ Working temperature from 105°C to 185°C.
- ◆ Overheat safety thermostat.
- ◆ All models have right-angled side edges to allow flush-fitting joins between units, eliminating gaps and possible dirt traps.
- ◆ One piece pressed worktop in 1,5mm stainless steel with smooth, rounded corners.
- ◆ Front panel in stainless steel with Scotch Brite finish.
- ◆ IPX4 water protection.
- ◆ The special design of the control knobs and bezels guarantees against water infiltration.
- ◆ Oil drainage via a tap with push and turn safety mechanism, located on the front panel of the unit.
- ◆ Main connections can be via the rear of the unit.
- ◆ Access to all components from the front.
- ◆ All models can easily be mounted on open

base cupboards or bridging supports.

- ◆ All top models provided with service duct to facilitate installation.

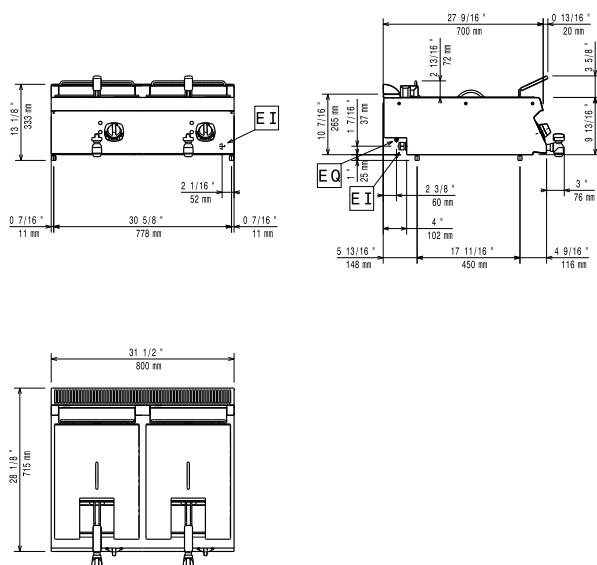
TECHNICAL DATA				
CHARACTERISTICS	MODELS			
	Z7FRED1E00 372079	Z7FRED1E0N 372142	Z7FREH2E00 372080	Z7FREH2E0N 372143
Power supply	Electric	Electric	Electric	Electric
External dimensions - mm				
width	400	400	800	800
depth	700	700	700	700
height	250	250	250	250
N° of wells	1	1	2	2
Usable well dimensions - mm				
width	240	240	240	240
depth	420	420	420	420
height	235	235	235	235
Thermostatic	●	●	●	●
Temperature limiter	●	●	●	●
Maximum Well Capacity -lt	10, 12	10, 12	10, 12	10, 12
Power - kW				
installed-electric	8.7	8.7	17.4	17.4
Net weight - kg.	25	25	45	45
Supply voltage	400 V, 3N, 50/60	230 V, 3, 50/60	400 V, 3N, 50/60	230 V, 3, 50/60
INCLUDED ACCESSORIES				
BASKET FOR 12 LT ELECTRIC FRYER TOPS	1	1	2	2

372142

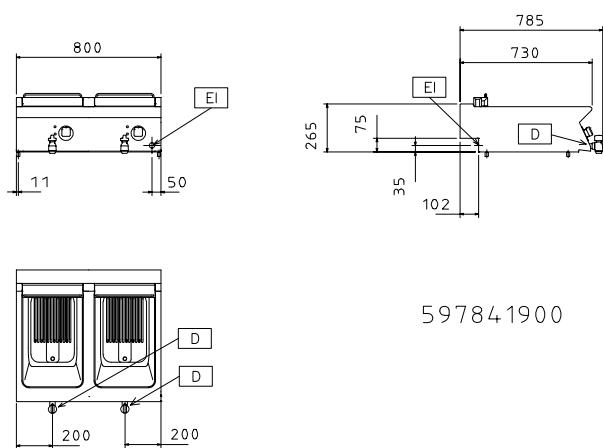


597841800

372080



372143



597841900

LEGEND

	Z7FRED1E00 372079	Z7FRED1E0N 372142	Z7FREH2E00 372080	Z7FREH2E0N 372143
EI - Electrical connection	400 V, 3N, 50/60	230 V, 3, 50/60	400 V, 3N, 50/60	230 V, 3, 50/60

OPTIONAL ACCESSORIES

ACCESSORIES	MODELS			
	Z7FRED1E00 372079	Z7FRED1E0N 372142	Z7FREH2E00 372080	Z7FREH2E0N 372143
2 SIDE COVERING PANELS H=250-D=700-Z/OEM	206320	206320	206320	206320
BASKET FOR 12 LT ELECTRIC FRYER TOPS	921629	921629	921629	921629
CHIMNEY COVER 400MM OPEN	206284	206284		
CHIMNEY UPSTAND 400MM	206303	206303		
CHIMNEY UPSTAND 800MM			206304	206304
FRONTAL HANDRAIL 1200 MM	206191	206191	206191	206191
FRONTAL HANDRAIL 1600 MM	206192	206192	206192	206192
FRONTAL HANDRAIL 400 MM	206166	206166		
FRONTAL HANDRAIL 800 MM	206167	206167	206167	206167
LARGE HANDRAIL(PORTIONING SHELF)400 MM	206185	206185	206185	206185
LARGE HANDRAIL(PORTIONING SHELF)800 MM	206186	206186	206186	206186
SIDE HANDRAIL-RIGHT/LEFT HAND-700 LINE	206240	206240	206240	206240
SUPPORT FOR "BRIDGE" SYSTEM 1000 MM	206138	206138	206138	206138
SUPPORT FOR "BRIDGE" SYSTEM 1200 MM	206139	206139	206139	206139
SUPPORT FOR "BRIDGE" SYSTEM 1400 MM	206140	206140	206140	206140
SUPPORT FOR "BRIDGE" SYSTEM 1600 MM	206141	206141	206141	206141
SUPPORT FOR "BRIDGE" SYSTEM 400 MM	206154	206154		
SUPPORT FOR "BRIDGE" SYSTEM 800 MM	206137	206137	206137	206137



www.zanussiprofessional.com