

## RANGE COMPOSITION

EVO700: range comprised of over 100 models designed to guarantee the highest level of performance, reliability, energy saving, safety standards and ergonomic operation. These concepts are reflected throughout the line in its modularity, construction and numerous configurations. Thanks to its advance technology and premium performance, the EVO700 is a perfect solution for institutions with a limited footprint as well as restaurants needing to obtain the most from the kitchen space. The models detailed in this sheet are 5 litres electric fryers with two wells.



372074

# EVO700

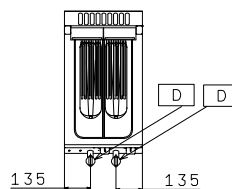
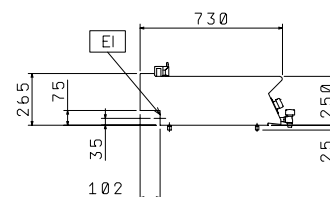
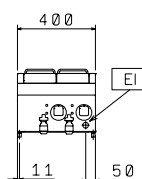
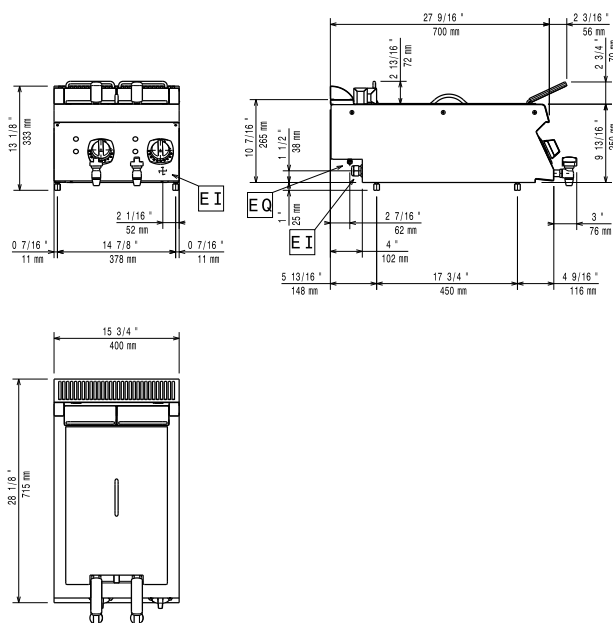
## ELECTRIC FRYERS - 2X5 LT **ZANUSSI** PROFESSIONAL

## FUNCTIONAL AND CONSTRUCTION FEATURES

- ◆ Tilting incoloy armoured high efficiency heating elements located inside the well.
- ◆ Working temperature from 105°C to 185°C.
- ◆ Overheat safety thermostat.
- ◆ All models have right-angled side edges to allow flush-fitting joins between units, eliminating gaps and possible dirt traps.
- ◆ One piece pressed worktop in 1,5mm stainless steel with smooth, rounded corners.
- ◆ Front panel in stainless steel with Scotch Brite finish.
- ◆ Oil drainage via a tap with push and turn safety mechanism, located on the front panel of the unit.
- ◆ IPX4 water protection.
- ◆ The special design of the control knobs and bezels guarantees against water infiltration.
- ◆ Main connections can be via the rear of the unit.

- ◆ Access to all components from the front.
- ◆ All models can easily be mounted on open base cupboards or bridging supports.
- ◆ All top models provided with service duct to facilitate installation.

TECHNICAL DATA		
CHARACTERISTICS	MODELS	
	Z7FRED2A00 372074	Z7FRED2A0N 372139
Power supply	Electric	Electric
External dimensions - mm		
width	400	400
depth	700	700
height	250	250
N° of wells	2	2
Usable well dimensions - mm		
width	110	110
depth	420	420
height	235	235
Thermostatic	●	●
Temperature limiter	●	●
Maximum Well Capacity -lt	4, 5	4, 5
Power - kW		
installed-electric	9	9
Net weight - kg.	20	20
Supply voltage	400 V, 3N, 50/60	230 V, 3, 50/60
<b>INCLUDED ACCESSORIES</b>		
2 BASKETS FOR 2X5 LT AND 7 LT FRYERS	1	1



597841300

## LEGEND

EI - Electrical connection

Z7FRED2A00  
372074

400 V, 3N, 50/60

Z7FRED2A0N  
372139

230 V, 3, 50/60

## OPTIONAL ACCESSORIES

## ACCESSORIES

## MODELS

	Z7FRED2A00 372074	Z7FRED2A0N 372139
2 BASKETS FOR 2X5 LT AND 7 LT FRYERS	960638	960638
2 SIDE COVERING PANELS H=250-D=700-Z/OEM	206320	206320
CHIMNEY COVER 400MM OPEN	206284	206284
CHIMNEY UPSTAND 400MM	206303	206303
FRONTAL HANDRAIL 1200 MM	206191	206191
FRONTAL HANDRAIL 1600 MM	206192	206192
FRONTAL HANDRAIL 400 MM	206166	206166
FRONTAL HANDRAIL 800 MM	206167	206167
LARGE HANDRAIL(PORIONING SHELF)400 MM	206185	206185
LARGE HANDRAIL(PORIONING SHELF)800 MM	206186	206186
SIDE HANDRAIL-RIGHT/LEFT HAND-700 LINE	206240	206240
SUPPORT FOR "BRIDGE" SYSTEM 1000 MM	206138	206138
SUPPORT FOR "BRIDGE" SYSTEM 1200 MM	206139	206139
SUPPORT FOR "BRIDGE" SYSTEM 1400 MM	206140	206140
SUPPORT FOR "BRIDGE" SYSTEM 1600 MM	206141	206141
SUPPORT FOR "BRIDGE" SYSTEM 400 MM	206154	206154
SUPPORT FOR "BRIDGE" SYSTEM 800 MM	206137	206137



www.zanussiprofessional.com